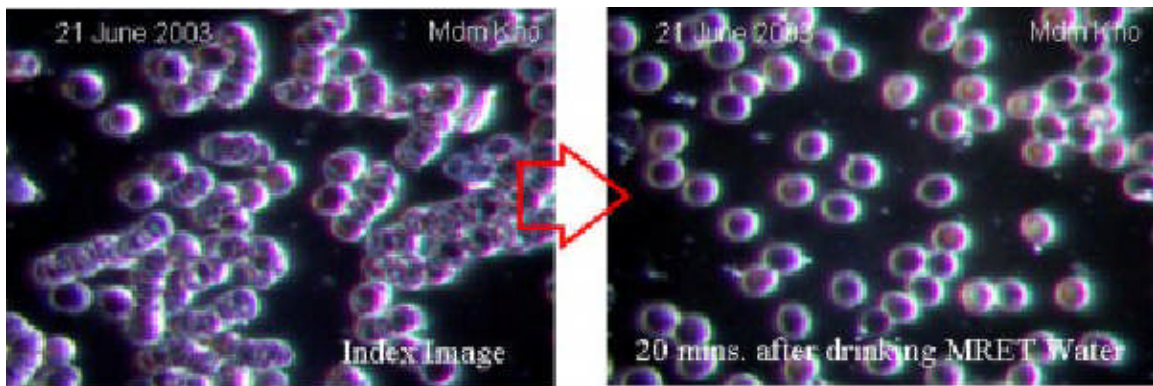


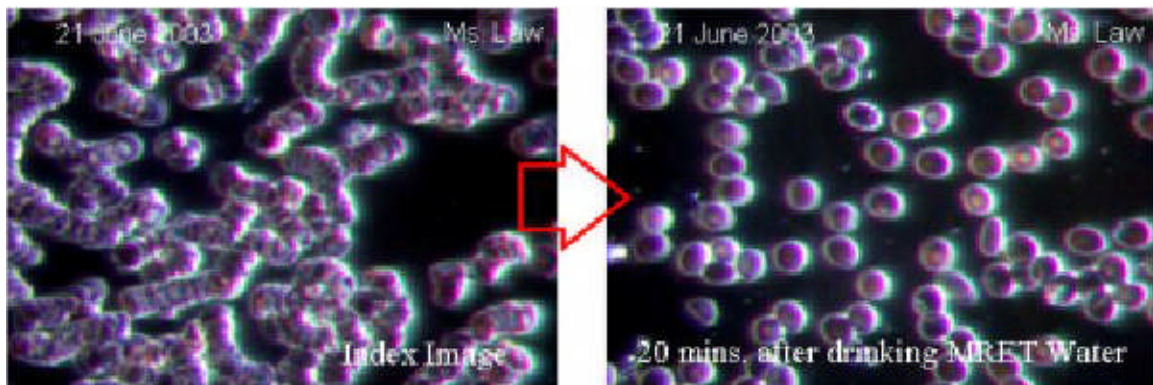
## MRET Water Effect on Red Blood Cells.

Live Blood Cell Analysis was conducted by Dr. Vincent Seet, Ph.D at Elixir Health Ltd. headquarters in Singapore. The experiment was conducted according to the standard methodology. The tested subjects were verified not to ingest MRET Activated Water for the last 24 hours. A drop of blood sample was taken from his finger tip and placed on a specimen slide in a series of layers. After the layers dried, they were observed under the microscope. Digital camera attached to microscope took a picture of the samples. Then the subjects drank a glass of Activated Water. 20 minutes later, a drop of blood sample was taken from the finger tip one more time. Samples were observed under the microscope, and digital camera took another pictures. Both images of each tested subject were compared and analyzed. The image of the blood sample taken before the ingestion of MRET Activated Water shows the patterns known as Rouleau formation of red blood cells. Blood cells are stacked forming worm-like patterns. The presence of massive Rouleau is a result of poor protein digestion. It usually develops such symptoms as fatigue, shortness of breath, and poor blood circulation in hands and feet because red blood cells cannot carry enough oxygen.

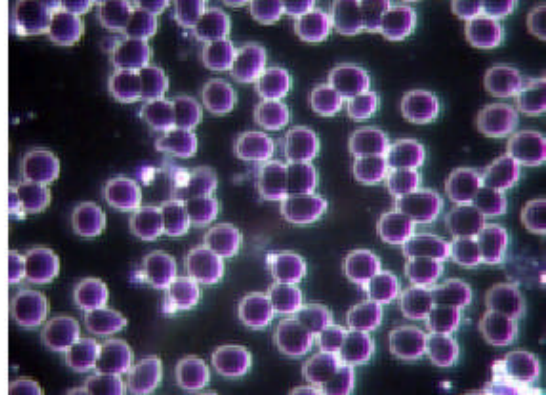
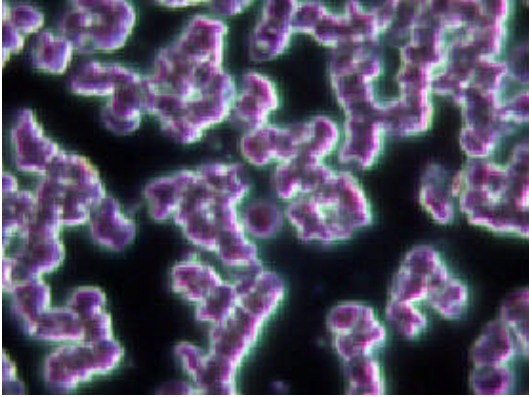
### Live Blood Cell Analysis



Subject #1



Subject #2



Subject #3

*Left images represent blood sample before the ingestion of Activated water. Right images – 20 minutes later, after the ingestion of Activated water. It shows dramatic improvement of blood morphology within 20 minutes.*

20 minutes later, after the ingestion of Activated Water the image of blood cell sample dramatically changed. The worm-like patterns were broken and the nice round individual patterns typical for healthy blood cells were formed.